



# Rock River Reflections

A publication of the *Rock River COALITION* produced in cooperation with the University of Wisconsin-Extension Fall 2008 Volume 11, Number 4

## Friends of Badfish Creek Watershed Really Clean-up!

by Scott Taylor, Taylor Conservation, RRC Board and member of the Friends of Badfish Creek Watershed, a Chapter of the RRC

Many urban streams in the Rock River Basin are hidden from public view. Their straightened, brush-lined channels flow unnoticed behind homes and businesses. Cities and villages often value small urban streams for their role in quickly draining runoff from rooftops and pavement. Indeed one cannot walk far along the bed of such a stream without encountering large storm pipes. But judging from the quantity of debris – pop cans, paper bags, plastic items, bottles – scattered along the bed and banks of an urban channel, these conduits funnel much more than water.



On September 27<sup>th</sup> **The Friends of Badfish Creek Watershed** (FBCW), a recently formed chapter of the Rock River Coalition, organized a stream clean-up of the **Butter Factory Creek**, in the Village of Oregon, involving several youth groups. The Butter Factory Creek is a tributary of the Badfish Creek that flows through the Village. While many small urban waters flow in response to recent rainfall and run dry the rest of the time, Butter Factory Creek is fed continuously by a “sand-boil” spring at its head. Cold, clear water coursed through watercress beds on the morning

of the clean-up, in spite of a long spell of dry weather.

After a brief introduction and safety discussion by FBCW, kids and adult leaders from Oregon Headliners 4-H, Black Hawk Council Girl Scouts, Boy Scout Troops 50 & 168 and the Ecologically Concerned Students of Oregon (ECOS) spent 2 hours combing the brushy banks and knee-deep water for trash. Though they mostly gathered bits of paper and plastic, as well as bottles and cans, they did manage to free a large section of silt fence and several pieces of lumber from the bed of the creek.

After gathering the garbage into large bags, which the Village of Oregon Public Works Department offered to pick up, the group enjoyed cold drinks and snacks. The kids graciously posed for a series of photos, in which they displayed their “FBCW Cleanup” shirts, which were made to commemorate the occasion thanks to the generosity of Stoughton Hospital. Many other sponsors made this event possible. They included the Dane County Environmental Council, Curves, Cousin's Subs, Kwik Trip, Pizza Hut, Sub Town Deli and StopNGo Stores. Their donations

enabled the purchase of work gloves, heavy-duty garbage bags, drinks, cups and other items.

Gathering litter may not produce dramatic water quality improvements; however, our clean-up highlights a precious water resource in the heart of Oregon. We are optimistic that more such events can begin to reverse the pattern of neglect of urban waters.



Volunteers don waders, Friends of Badfish Creek Watershed t-shirts and smiles while making a difference as they clean up Butter Factory Creek in Oregon. photo by Sharon Beall

Return Service Requested

NONPROFIT ORG.  
U.S. POSTAGE PAID  
JEFFERSON, WI  
PERMIT NO. 7

Jefferson, WI 53549-1976  
864 Collins Rd  
*Rock River*  
COALITION  
In cooperation with  
Jefferson County  
**Extension**  
UW

# President's Message

Dear Rock River Coalition Friends and Members,

It's time again to renew your membership and your support for our Rock River Coalition. We are so fortunate to live among green rolling hills, topped with oak forests, and rich in life-giving water resources. The rich farmland and beautiful waterside settings for our communities make our part of the state a uniquely wonderful place to raise a family, set up a business, or spend a vacation.

These great features are a magnet for development, and the changes we have all seen in the last decades can threaten the qualities and opportunities we treasure here. We need good planning, and sound information to draw from, so our area can grow and prosper. The Rock River Coalition is dedicated to helping provide the basis for sound land use decisions and the conservation of the natural resources we are so fortunate to enjoy.

We have had a busy and productive year! Highlights include:

- Award winning stream monitoring program that has set the standard for the state.
- Innovative and award winning wetland monitoring program to document the re-birth of the Zeloski Marsh – 1500 acres of restored wetland – and an amazing resurgence in bird life.
- Water Star Community program will be ready for testing in a few pilot cities next year. This new program will give guidance, incentive, and recognition to communities who

go well above the basic requirements to take care of the water in their community.

- Groundwater Flow Model – GFLOW will soon be available to communities to assist their land use planning by predicting how changes in land use will impact our groundwater and surface water interactions. This is critical information as our communities grow.

- This November we are honored to receive the 2008 Partnership Award given by the Wisconsin Park & Recreation Association.

But we can't do it without you! While our grant funding has supported our projects, only your membership helps pay for our everyday costs. We depend on you, our members, to support our most basic operating expenses. We have a terrific volunteer board with diverse interests and skills to accomplish our many projects. We also need a strong membership to demonstrate support for these efforts.

As we plan our growing programs in 2009, I would personally like to thank you for past support and your renewed commitment to help us make our Rock River Basin a beautiful and healthy place to live, work and play.

Lisa Conley, President  
Rock River Coalition



## Water Star Community Program FAQ's

by Suzanne Wade, UWEX Rock River Basin Educator and Water Star Coordinator

### What is Water Star?

- Water Star is a program currently under-development that rewards communities for preserving and improving local water quality.
- Water Star has four main components: surface water, groundwater, habitat & wildlife and health & recreation.
- There are five general types of activities in Water Star: education, planning, physical improvements, municipal ordinances, municipal programs and operations. To view the complete list of activities go to [www.rockrivercoalition.org/waterstar.asp](http://www.rockrivercoalition.org/waterstar.asp).

### How does Water Star work?

- Water Star community residents and local governments work together on the issues they identify as local priorities.
- Water Star is a voluntary program, based on incentives, not regulation.
- Water Star provides a framework for communities to address water quality issues,

offering guidance and examples from elsewhere in the state to make preservation, conservation and restoration easier.

- Water Star communities earn points for their activities, depending on points they will become either a Bronze, Silver or Gold Water Star Community.

### What is happening now?

- Water Star is currently underdevelopment, with activity lists being developed with case studies and examples.
- Currently, we are looking for individuals, businesses, professionals to further hone the activity lists, write introductions and case studies. We'll be doing this in a series of focus groups in December and January. We expect to hold them in Madison, Stevens Point and then either Milwaukee, Fox Cities or Eau Claire. If you would like to attend one of these work session contact Suzanne Wade by calling 920-674-8972 or by email at [suzanne.wade@ces.uwex.edu](mailto:suzanne.wade@ces.uwex.edu).



## Mission

*"To educate and bring together people of diverse interests to protect and improve the economic, environmental, cultural, and recreational resources of the Rock River Basin in Wisconsin"*

### PRESIDENT:

Lisa Conley

### DIRECTORS:

Ken Wiesner, President Elect  
Tim Reel, Secretary  
Jan Ruster, Treasurer  
Joe Dorava, Past President  
Bill Biesmann  
Patricia Cicero  
Tracey Novak  
Sandra Prebeg  
Scott Taylor  
Suzanne Wade

### Citizen Monitoring Director:

Ed Grunden, 920-648-2673, [ed@rockrivercoalition.org](mailto:ed@rockrivercoalition.org)

### GFLOW Coordinator:

Vierbicher Associates, 608-524-6468

### Water Star Community Project Coordinator:

Suzanne Wade, 920-674-8972  
[waterstar@rockrivercoalition.org](mailto:waterstar@rockrivercoalition.org)

### Administrative Assistant:

Jennifer Hanneman, 920-674-9380  
[jennifer@rockrivercoalition.org](mailto:jennifer@rockrivercoalition.org)

### RRC Address:

864 Collins Road  
Jefferson, WI 53549-1976

[rriver@excel.net](mailto:rriver@excel.net)

[www.rockrivercoalition.org](http://www.rockrivercoalition.org)

### Newsletter Editor:

Suzanne Wade, 920-674-8972  
[suzanne.wade@ces.uwex.edu](mailto:suzanne.wade@ces.uwex.edu)

**Photos:** Sharon Beall, Margaret Burlingham, Dodge County, Michael Forster Rothbart, Bob Queen, Sea Grant, Marsha Vomastic, Suzanne Wade.

Photo credits Earth Poem: Suzanne Wade, Larry Wade, NASA, Bob Korth, Bob Queen, Jeffery Strobel, DNR file photos, UWEX file photos, Bill Volkert, Adobe

*RRC is a 501(c)(3) not-for-profit organization, providing equal opportunity in employment & programming.*

*If you need special accommodation for programs please contact the RRC at least two weeks in advance.*



## Help stop aquatic invaders: be on the lookout for zebra mussels as you remove piers and boats

In the ongoing efforts to control the spread of aquatic invasive species, county and state officials have focused on limiting the spread of these invaders, primarily through education and outreach efforts. Riparian and non-riparian water users have a lot at stake. If new invaders, like Hydrilla, Quagga mussels (a close cousin of the zebra mussel), or Asian carp are introduced into the Yahara Lakes, the results could be devastating to recreational users and the fisheries.

Dane County has established a unique program to have local Dane County water users assist public officials in their efforts to stop the spread. Other basin water users can also play a role.

For non-riparian water users, it is imperative that every time they leave the water, they clean their boats, trailers and equipment of any mud or debris, plant matter or water in their bilge, bait buckets or live wells. By properly cleaning their boats and equipment each time they use it, boaters will help prevent the spread of aquatic invaders.

## Check piers and boats this fall

What about riparian (stream and river) owners? How can they help? All waterfront property owners on the Yahara Chain of lakes can examine their piers and boats for zebra and Quagga mussels when they take them out of the water this fall. Riparian owners can provide valuable assistance by reporting any sightings helping track the spread of these invaders.

## What to look for

Quagga mussels are very similar, but larger than zebra mussels. (See comparison photos below from Sea Grant) While large adult zebra or Quagga mussels are fairly easy to identify, smaller mussels



that have recently attached to a pier or boat will feel like rough sandpaper and be much harder to identify. If you think you have discovered a zebra or Quagga mussel in Dane County, preserve the specimen or specimens in a small jar of rubbing alcohol and send it to Ron Martin for verification at: Dane County Office of Lakes and Watersheds, One Fen Oak Court, Madison WI 53718-8812. For questions, email martin.ronald@co.dane.wi.us.

Individuals who find a suspect mussel in waters where they have not been reported, should go to <http://dnr.wi.gov> and search for Aquatic Invasive Animal Incident Report Form 3200-126 (R 02/08), which will have directions on what to do.

## Building Communities: Focus on Sustainability Educational Series Offered

Sustainable living is becoming more and more important to everyone. However, today's society is complex and challenging making it hard to achieve this important objective. The University of Wisconsin-Extension, Jefferson County, the UWEX Rock River Basin Educator, the Rock River Coalition and the Town and Country RC&D are bringing to Jefferson County a satellite education series (webinar): *Building Communities: A Focus on Sustainability*, to help municipal staff and elected officials, individuals, businesses, farmers and others take vital steps to introduce sustainability to their work and personal lives.

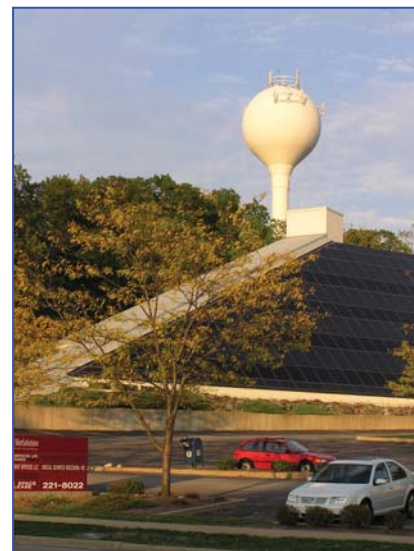
This year's Building Communities Webinar Series tackles important questions. They will address global, regional and local issues and will challenge ourselves as both a community and as individuals. Join us in discovering some of our constraints and uncovering the limitless potential we possess to overcome them. If you care deeply about the economy and the viability of our businesses ... if you care deeply about the ecological health of our planet ... if you care deeply about the quality of life in our community – this webinar series is for you. Join us to be enlightened, to be informed, to be challenged, and to be called to action!

The next session "Energy Efficiency" will be held on November 18, 2008, 11:30-12:30pm at the UWEX Jefferson County Office, 864 Collins Rd, Jefferson.

This program's description is: *In this time of record-high energy prices and recognition of the ties between national security and energy independence and between utility system reliability and global climate change concerns, energy efficiency is a key approach among the remedies. But how does a local government or business act strategically to make the most of every Btu? This session will describe how to measure current energy use and to create an energy plan with the technologies, practices, programs and policies that maximize energy efficiency and cost savings.*

Register by calling Linda at the UWEX office at 920-674-7296 or by emailing [lindaw@co.jefferson.wi.us](mailto:lindaw@co.jefferson.wi.us). There is no fee to attend the UWEX Jefferson County site; other UW-Extension sites offering the program locally include: Dane, Milwaukee, Fond du Lac, Green Lake and Ozaukee counties. Fees may be charged, so interested individuals should contact them directly for registration information.

A limited number of site licenses are available for individuals or organizations who wish to sponsor the program at their own locations. If interested go to <http://www.uwex.edu/>



Communities throughout the basin are involved in sustainability efforts, this series is one way to find out how to make true sustainability happen.

Photo by Suzanne Wade

[ces/cced/communities/Building\\_Community.cfm#Registration](http://ces/cced/communities/Building_Community.cfm#Registration), the cost is \$40 a session or \$275 for all nine sessions, with unlimited local attendance.

The series is co-sponsored by the University of Wisconsin-Extension Center for Community and Economic Development and Sustainability and Energy Teams.

The first session *Setting the Stage: Sustainability and Sustainable Community Development* held on Oct 21, will be archived and participants will be able to view this one as well.

Other sessions in the series, which will all be held on the third Tuesday of the month from 11:30 – 12:30pm include:

December 16, 2008, Renewable Energy

January 20, 2009, Sustainability and Comprehensive Planning

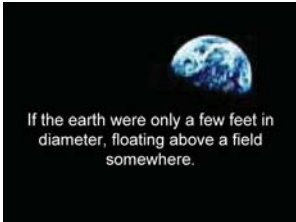
February 17, 2009, Sustainable Business Practices and Strategies

March 17, 2009, Green Collar Jobs: Sustainable Work in a Low Carbon World

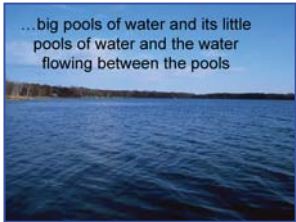
April 21, 2009, Local Food Networks: Food Localization as a Sustainability Strategy

May 19, 2009, Sustainability Indicators and Measurement

June 16, 2009, Community Organizing for Sustainability



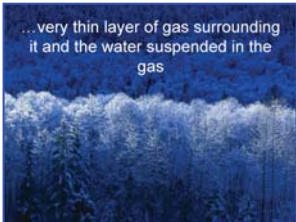
If the earth were only a few feet in diameter, floating above a field somewhere.



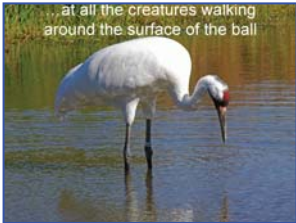
...big pools of water and its little pools of water and the water flowing between the pools



...the bumps on it and the holes in it



...very thin layer of gas surrounding it and the water suspended in the gas



...at all the creatures walking around the surface of the ball

# If the earth were only a few feet in diameter....

Poem by Joe Miller, 1975 Moab Utah: Graphics by Jennifer Lach



*This poem originally written in the shape of a ball was read at the 2008 RC&D Conference in Oconomowoc, WI. The graphics were added by Jennifer Lac, UW Environmental Resources Center. The pictures around the poem were put together for an electronic presentation by Suzanne Wade, UW-Extension Rock River Basin Educator. To have a pdf of the poem emailed to you contact [suzanne.wade@ces.uwex.edu](mailto:suzanne.wade@ces.uwex.edu). Photo credits on page 2.*



...The earth were only a few feet in diameter



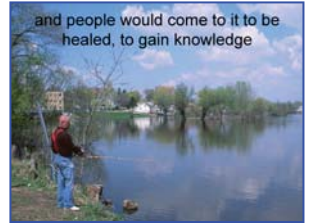
their own roundness, could be nothing without it if..



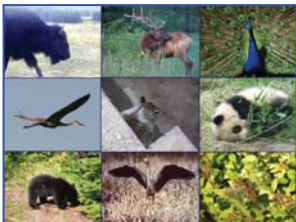
People would love it, and defend with their lives because they would know that their own lives,



...to know beauty and wonder how it could be



and people would come to it to be healed, to gain knowledge



... its precious and would protect it so it would not be hurt



...greatest wonder known

## New Offices and New Staff for Town & Country RC&D



Pitts, Gehred and Ficenec can be reached at the Jefferson office at 134 West Rockwell Street, Jefferson, WI 53549, 920-541-3208. To learn more about the mission of TCRCD or RC&D's in general go to: [www.townandcountryrcd.org](http://www.townandcountryrcd.org).

Town and Country RC&D is a key partner of the Rock River Coalition. Recently they relocated to Jefferson with three new staff:

Craig Ficenec is the Natural Resources Conservation Service (NRCS) Coordinator for Town and Country RC&D. Craig is a native of Nebraska with conservation experience in the Midwest, West Coast, and Latin America. Craig received a degree in engineering at Iowa State University. He then served with the Peace Corps as a water supply engineer in Honduras. He came to Wisconsin to earn a Masters degree in Land Resources at UW-Madison, including a thesis study of watershed management in Peru. Craig then joined the USDA NRCS as an agricultural engineer in California. Most recently, Craig was Conservation Program Manager at the Agriculture and Land-Based Training Association (ALBA), a non-profit organic farm education and business incubator program in Salinas, California.

Peter G. Pitts is the new grazing technician for Town & Country. Peter brings over twenty years' experience as a farmer and grazer to the position. He has been a forage specialist doing USAID Farmer-to-Farmer volunteer work internationally for the past 9 years. He has traveled on more than 20 assignments assisting former Soviet dairy farmers in increasing forage yields. He was assisting farmers in the Republic of Georgia when the Russians attacked and had to be evacuated.

Beth Gehred is the Vision and Issue Team Liaison for Town & Country RC&D. Beth co-founded the non-profit citizen grassroots organizations Heart of the City and Sustain Jefferson, introducing The Natural Step framework for sustainable development to Jefferson County. Beth is committed to increasing the impact TCRCD's Issue Teams have on restoring the environment while building social and economic capital. Anyone interested in joining Town & Country's Sustainability, Agriculture, or Water Issue Teams is encouraged to call Beth.

## Industrial Sludge Spreading Problems in our Basin

by Lisa Conley, RRC President

Last February, residents near Fox Lake, in the upper reaches of our Rock River Basin, reported strong, obnoxious odors, which were caused by spreading three million gallons of "combined industrial waste" on agricultural fields adjacent to creeks, wetlands and ditches leading to Fox Lake. They learned that industrial waste can include a mixture of waste from food, dairy, and other industrial sources, and that the exact mixture was unknown.



It turns out that state rules (NR 214) governing the spreading of manure are more restrictive than the rules for spreading industrial waste. While manure must not exceed proscribed phosphorus levels, and cannot be spread on frozen ground when it is likely to be carried into nearby waters, there is no such restriction for industrial sludge except for a minimum slope and a nitrogen limit. Since phosphorus has proven to be the key nutrient for turning our blue lakes green with algae, there is real cause for concern. There is also no routine supervision or testing of the substances being spread.

Wisconsin is viewed as a leader in protecting water quality, but our laws for the spreading of industrial waste are weaker than surrounding states. Industrial sludge from Illinois, Iowa, and Minnesota is hauled to Wisconsin for spreading on the land. Lower spreading fees provide even more incentive to haul out-of-state industrial sludge to be spread in Wisconsin.

### Got Karst? Yes We Do - The plot thickens.

Karst is fractured limestone (carbonate) bedrock that allows contaminants to seep into groundwater through cracks and sinkholes,



Typical cracks in limestone bedrock, allow surface water to move quickly down to our groundwater without filtering of nutrients, pathogens or other waste products.

file photos

where it can travel relatively quickly through layers of rock. The groundwater where karst underlies the topsoil is much more vulnerable to contamination from the spreading of any kind of waste. It turns out that yes, we do have karst bedrock in much of our Rock River Basin.

In 2007 the NE Wisconsin Karst Task Force reported the need for more restrictive spreading regulations for manure, municipal biosolids, septic and holding tank waste, and industrial waste in karst areas. No action has been taken to date – the link to the report is at the end of the article.

### We Need Stronger Laws.

We need the rules for spreading industrial waste to be as restrictive as for spreading other types of waste, and to recognize that more protection is needed in Karst areas, where the groundwater is more vulnerable. We need our Wisconsin laws regulating this spreading to be at least as strong as surrounding states so Wisconsin fields will no longer be a dumping ground for out-of-state waste.

The Wisconsin League of Conservation Voters will host Conservation Lobby Day on Feb. 25, 2009. This is your opportunity to join with hundreds of Wisconsin citizens - meet with your legislators and let them know of your concerns about this and other conservation priorities.

An Award Winning Brochure – "Karst - Avoid That Sinking Feeling" was produced by the Rock River Coalition, explaining the situation, and what you and your community can do to protect our groundwater and public health. A new revised brochure will be available soon. Contact Marie at [marier@co.jefferson.wi.us](mailto:marier@co.jefferson.wi.us) to receive copies for distribution.

Rock River Coalition brochure on Karst <http://basineducation.uwex.edu/rockriver/documents/2005karst.pdf>

Report of the NE Wisconsin Karst Task Force <http://learningstore.uwex.edu/Final-Report-of-the-Northeast-Wisconsin-Karst-Task-Force-P1234C120.aspx>



## Meet the New Face on Staff

### Joleen Henneman



I am thrilled to be joining the Rock River Coalition team in this newly created, part-time, temporary UW-Extension position. My main duties include organizing a forum on the Koshkonong Creek, writing articles for the Rock River Reflections

newsletter and basin media releases, organizing 'Planning the Rock' Issue Team meetings, planning two GFLOW model meetings, and assisting with the development of presentations on nonpoint source pollutants in the basin.

I started in mid-October and I've already delved into the Koshkonong Creek Forum planning. Koshkonong Creek starts around Sun Prairie, flows into Lake Koshkonong, and eastward almost to Rock Lake. We are planning to host the forum in January 2009. If you would like to be a part of planning or would like to receive an invitation, please contact me at 920-674-7442. I've also been familiarizing myself with the Rock River Coalition, UW-Extension, and the GFLOW model. I'm really looking forward to working on these projects!

I graduated from UW – Stevens Point in 2006 with a bachelor's degree in Environmental Education and Interpretation. While in that program, I interned at the Central Wisconsin Environmental Station in Amherst Junction and at Schmeckle Reserve in Stevens Point. During the summers of 2003 and 2004 I developed youth outdoor education programs at the Pheasant Branch Conservancy in Middleton, WI. Upon graduation, I accepted an education position at the Cable Natural History Museum in Northern Wisconsin. In March 2008, I moved to the Madison area to pursue other career opportunities.

I currently work part-time for the Waunakee Park and Recreation Department where I started youth environmental education programs, among many other duties. I also served as a part-time aquatic invasive species specialist for the Wisconsin Department of Natural Resources last summer. In that position, I educated boaters about invasive species and sampled several area lakes for zebra mussels and spiny water fleas. I feel that all of these experiences have adequately prepared me to assist with Rock River Basin education.

I have a strong connection to the natural world and live a lifestyle that mirrors my environmental belief. I believe that people who learn to appreciate the value of their environment will become stewards of the earth. I hope that by working with the Rock River Coalition and UW-Extension, I can help foster environmental stewardship. I am very happy to be joining the team!

*Joleen*

## Become a Groundwater Guardian Green Site

The Groundwater Guardian Green Site (GG Green Site) program was developed to recognize good stewards of groundwater by encouraging managers of highly-managed green spaces to implement, measure, and document their groundwater friendly practices related to chemical use, water use, pollution prevention, water quality, and environmental stewardship.

Highly-managed green spaces include, but are not limited to: Golf courses, ball fields, educational campuses, residential, recreational, city, and office parks, wellhead protection areas, and nature centers.

Each GG Green Site collects data and documents the environmental impact of their groundwater friendly practices, such as pounds of fertilizer saved annually by using lower input plants, gallons of water saved annually by using low water/maintenance plant materials, amounts of toxic substances disposed of properly, and other related items. To see a GG Green Site in action, download the Case Study of Bayside Golf Course in Nebraska from their website: <http://www.groundwater.org/gg/greensites.html>.



*Two of the many places in the Rock River Basin that could probably become a Groundwater Guardian Green Site are the Countryside Home in Jefferson, with their extensive native prairie plantings replacing lawn and Edgewood College with their innovative stormwater infiltration practices including this rain garden.*

*Countryside Photo by Margaret Burlingham, Edgewood photo by Bob Queen*

Provides an opportunity for managers of highly-managed green space to educate themselves, site staff, and site visitors about groundwater.

Documents the environmental benefit of each site's groundwater-friendly practices.

Encourages the sustained use of groundwater-friendly practices on highly-managed green spaces.

### It's Confidential

All information submitted to The Groundwater Foundation in Green Site program applications is confidential, and will not be shared without the permission of the site manager.

### Get Involved!

There's no time like the present! Sites can use the exclusive GG Green Site logo and name as soon as they are designated.



The nicer weather of the spring and summer months will bring more visitors to your site – get involved as a GG Green Site now and take advantage of the opportunity to share your groundwater stewardship efforts with visitors and the community.

The Rock River Coalition has been a Groundwater Guardian Affiliate since 2004 through its Groundwater Issue Team, working to promote municipal development of Groundwater Guardian Teams.

Education is built in to the GG Green Site program. Locations document their internal education efforts for site staff and external education for site visitors. The application itself serves dual purposes – first, as a way to objectively and uniformly evaluate each site's practices, and second, as an educational tool for site managers that work through it.

### Program Benefits

Being guardians and good stewards of groundwater is something managers and superintendents of many highly-managed green spaces strive to do every day, whether it's through protecting a well, using water efficiently, managing fertilizer and pesticide use, or controlling runoff. The Green Site program:

Publicly recognizes highly-managed green spaces for their groundwater stewardship.

Generates positive PR for your site.

No team is required for participation in the GG Green Sites program, and no affiliation with a Groundwater Guardian team is necessary. The program is open to any site implementing groundwater-friendly practices. Completed applications must be submitted by December 31 to receive designation for that program year. Sites designated prior to The Groundwater Foundation's National Conference, held each November, will be nationally recognized in conjunction with the Groundwater Guardian National Designation Celebration.

If you are interested in participating in the GG Green Sites program, download the program application form at <http://www.groundwater.org/gg/greensites.html>. To learn more, read the frequently asked questions page on the web or contact The Groundwater Foundation at 1-800-858-4844 or email [guardian@groundwater.org](mailto:guardian@groundwater.org).

*The Groundwater Guardian Green Sites program is supported by Cargill, the Nebraska Environmental Trust, U.S. Environmental Protection Agency Region 7 Pollution Prevention Program, and the W.K. Kellogg Foundation.*

## Rock River Stormwater Group (RRSG)

A number of cities in the Rock River Basin are joining together to do joint stormwater education.

This partnership isn't limited to communities that have a stormwater permit, but will be open to any municipal government that desires to join the effort. Associate memberships will likely be available for Friends groups, lake associations and others interested in stormwater education.

The current agreement, which is not yet finalized, includes three tiers of membership:

- Full Members, with voting privileges are any organization who must hold an MS4 Permit. Fees are based on population \$5,000 for those over 10,000 and \$2,000 for those under 10,000.
- Associate Members are municipalities and agencies that do not have to meet MS4 permit requirements, but undertake responsibility to abide by permit requirements. Their annual fee will be \$1,000 and do not have voting privileges.
- Partners are any organization interested in promoting water quality by helping implement the stormwater education and outreach program. Partners do not have voting privileges nor do they pay a fee.

Any Municipality may receive credit towards their dues for inkind services such as handling group finances or providing adequate work space and resources to employees.

The group does intend to hire a half time Rock River Basin Stormwater Education Coordinator who will be responsible for carrying out the annual stormwater education plan.

The group is still working out the details of this position but are exploring several options including a direct hire, working through a non-profit or through a contract with a consulting firm or qualified individual. Their goal is to have the position up and running by March of 2009.

Once the rfp for the education coordinator is completed and the Memorandum of Understanding is available they will be posted at <http://basineducation.uwex.edu/rockriver>.

For questions contact either Dean Fisher, City of Whitewater at [dfischer@ci.whitewater.wi.us](mailto:dfischer@ci.whitewater.wi.us), or Suzanne Wade at [suzanne.wade@ces.uwex.edu](mailto:suzanne.wade@ces.uwex.edu).

## Become a RRC Member

In addition to supporting RRC work, members receive newsletters, notices of forums, conferences, and special events. To become a member, complete the following:

Name \_\_\_\_\_

Title \_\_\_\_\_

Affiliation \_\_\_\_\_

Address \_\_\_\_\_

City \_\_\_\_\_ State \_\_\_\_\_

Zip \_\_\_\_\_ Phone (\_\_\_\_) \_\_\_\_\_

E-mail \_\_\_\_\_

Memberships	
Individual	\$ 25 _____
Family	\$ 35 _____
Student/Senior Citizen	\$ 15 _____
Classroom	\$ 25 _____
Affiliates*	\$ 50 _____
Corporate	\$ 200 _____

\*Includes small businesses, organizations, lake districts, and municipal departments

Any donation of \$100 or more will be recognized and linked to your website from our website: [www.rockrivercoalition.org](http://www.rockrivercoalition.org)

Donors of \$500 or greater will receive an ad in this newsletter. Check the website above for more information.

Tax deductible donation	
Amount	Purpose
	General Support
	Citizen Monitoring
	Rain Gardens
	Other:

Donations are greatly appreciated and can be targeted towards specific projects.

Please mail this completed form with check to:

**Rock River Coalition**  
**823 Lucas Lane**  
**Jefferson, WI 53549 -1182**

or register and pay online with PayPal at:  
[www.rockrivercoalition.org/membership.asp](http://www.rockrivercoalition.org/membership.asp)

## Become a Chapter of the Rock River Coalition

The Rock River Coalition Board has established a new policy allowing the development of chapters.

The board hopes that establishing chapters throughout the basin will provide an opportunity for small groups of dedicated individuals to pursue projects without the need to incorporate.

The RRC expects that these chapters will either complete their expected work and dissolve, or become an incorporated non-profit of their own. Before becoming a chapter, the interested group develops goals and a plan. If approved, the RRC Board, issues a Charter setting forth the rights, responsibilities and obligations of the Chapter. Steps are also included in the Charter regarding budgets and funding, how changes to the plan can be made and establishing reporting requirements.

One of the keys to this arrangement is the



Upper and Lower Rock River Basins of Wisconsin

Chapter sets their own rules governing the conduct of their activities, within the policies of the RRC. Another benefit for both the RRC and the chapters is sharing membership income. If a RRC member is also a chapter member, then 25% of any RRC membership dues will be set aside for the chapter's use.

Of course, just like general members, the Chapter and its officers are not authorized to represent or act on behalf of the Rock

River Coalition; only the RRC Board is so authorized.

For more information about Rock River Coalition Chapters, contact Suzanne Wade at 920-674-8972 or by e-mail at [suzanne.wade@ces.uwex.edu](mailto:suzanne.wade@ces.uwex.edu) or go to [www.rockrivercoalition.org](http://www.rockrivercoalition.org).

# Rock River Reflections: Electrified

Budget challenges are all around us and the Rock River Coalition and UW-Extension are no different. This newsletter has been freely sent to RRC members and volunteers, plus many of our other partners: municipal staff, elected officials, agency staff, lake associations and districts, many, many non-profits plus other interested citizens.

Currently we are challenged with how to maintain this service with decreasing budgets. We may end up going to only a three time a year schedule instead of four times a year. Another alternative is to reduce the numbers being printed and mailed by sending an electronic version to those who would prefer that method, or to those who are not paying members or active volunteers. Finally, we could institute a small newsletter fee for those who wish to receive the newsletter but are not RRC members or volunteers.

We'll be sending out an email asking individuals who receive this which of these options would work best for them. We are also open to other suggestions, including advertising.

Help us save money and resources by receiving this newsletter via email.

Contact [marier@co.jefferson.wi.us](mailto:marier@co.jefferson.wi.us) to sign up.

Thanks for reading this, we hope you find value in the newsletter and can help us with this financial dilemma. If you would like to start receiving this newsletter electronically please email [marier@co.jefferson.wi.us](mailto:marier@co.jefferson.wi.us).



**Rain Gardens... a beautiful solution to water pollution**  
Free workshop sponsored by Lake Simons Improvement District and UWEX  
**TUESDAY, OCTOBER 28, 2008**  
**6:00-8:30 PM**  
**IAM LODGE 873 -**  
**CLAUSEN BOWLING GREEN PARK**  
**258 Barstow, Horicon**

**Agenda for Rain Gardens: A Beautiful Solution to Water Pollution**  
6:00 – 6:30 Registration/Refreshments and Visit the park's rain garden  
6:30 – 7:30 Welcome & "Diggin' into Rain Gardens: Why are they important?"  
7:30 – 8:15 "How to Build a Rain Garden"  
8:15 – 8:30 Questions and revisit Rain Garden

Pre-registration appreciated: Call Matt Hanson at the UWEX Dodge County Office at 920-386-3790 or email [matt.hanson@ces.uwex.edu](mailto:matt.hanson@ces.uwex.edu)

## Send Your Legislator Down the River – 2009 DNR Service Center, Horicon Paddle into the Horicon Marsh

Our 2008 event was literally washed out this past June during the floods [see photo]. We are planning to run the same event next year, date to be determined. We generally hold the event in June in order to take advantage of late sunsets. Possible dates would be Monday June 15, or Monday June 22, 2009. Please let the RRC office know if either of these dates are preferable for you.

At this event, participants will join city, county and state elected officials for a paddle into the Horicon Marsh in a canoe or kayak after enjoying a picnic dinner and a River Town Hall meeting.

Trips of various lengths are possible, starting at and returning to Greenhead Landing. The base route into the marsh to Four-mile Island and back will be about 5 miles long and is expected to take about two hours.

Longer routes of 6 and 7 miles in length are available for experienced paddlers using their own equipment. Information on the canoe route is available at: [http://dnr.wi.gov/org/land/wildlife/wildlife\\_areas/horicon/maps/canoemap.pdf](http://dnr.wi.gov/org/land/wildlife/wildlife_areas/horicon/maps/canoemap.pdf).

Further information and registration details will be available in spring, 2009.

Contact Ken Wiesner [ [wiesnerk@msn.com](mailto:wiesnerk@msn.com) ] with any questions, comments or to help.



Dodge County Parks canoes stranded by the record 2008 rains.  
photo Dodge County Parks



There's still time to get out and enjoy fall. Don't miss out on important events, sign up to receive the Rock River Update and Calendar of Events email list: by emailing [marier@co.jefferson.wi.us](mailto:marier@co.jefferson.wi.us).

photo by Marsha Vomastic

## Calendar of Events

### RRC Board Meeting

November 11, 2008 4:00 - 6:30 UWEX Jefferson County, 864 Collins Rd, Jefferson

The following meetings are currently being developed: Contact Joleen at [joleenh@co.jefferson.wi.us](mailto:joleenh@co.jefferson.wi.us) to be put on the invitation list:

GFLOW Meeting for sponsors

GFLOW Meetings for general public

Koshkonong Creek Forum

Planning the Rock: Discussion on how to make computer model maps and other information accessible to general public

Contact Suzanne Wade to be invited to the following meetings to be held in the Madison area, Stevens Point, Fox Cities and Milwaukee: (See page 2)

Water Star: Groundwater and Human Health

Water Star: Surface Water and Habitat

### Newsletter Deadline

Deadline for the winter newsletter is January 9, 2009.

To submit contact [suzanne.wade@ces.uwex.edu](mailto:suzanne.wade@ces.uwex.edu)

A letter-sized, full color version of this newsletter is available at [www.rockrivercoalition.org](http://www.rockrivercoalition.org).

For more information about these and other area events, meetings, workshops, or conferences go to <http://www.rockrivercoalition.org/events/calendar.asp>

### Look Inside to Find Articles on:

Friends of Badfish Creek Watershed Clean-up	Pg 1
President's Message: Time to Renew	Pg 2
Water Star Program FAQ's	Pg 2
Building Communities: Focus on Sustainability	Pg 3
Help Stop Aquatic Invaders	Pg 3
If the Earth were a Ball	Pg 4
New Staff at Town & Country RC&D	Pg 5
Industrial Waste Spreading a Major Concern	Pg 5
Meet Joleen Henneman, new project assistant	Pg 6
Become a Groundwater Guardian Green Site	Pg 6
Rock River Stormwater Group	Pg 7
Become a RRC Chapter	Pg 7
RRC Membership Form	Pg 7