

Friends of Badfish Creek Watershed

of Wisconsin

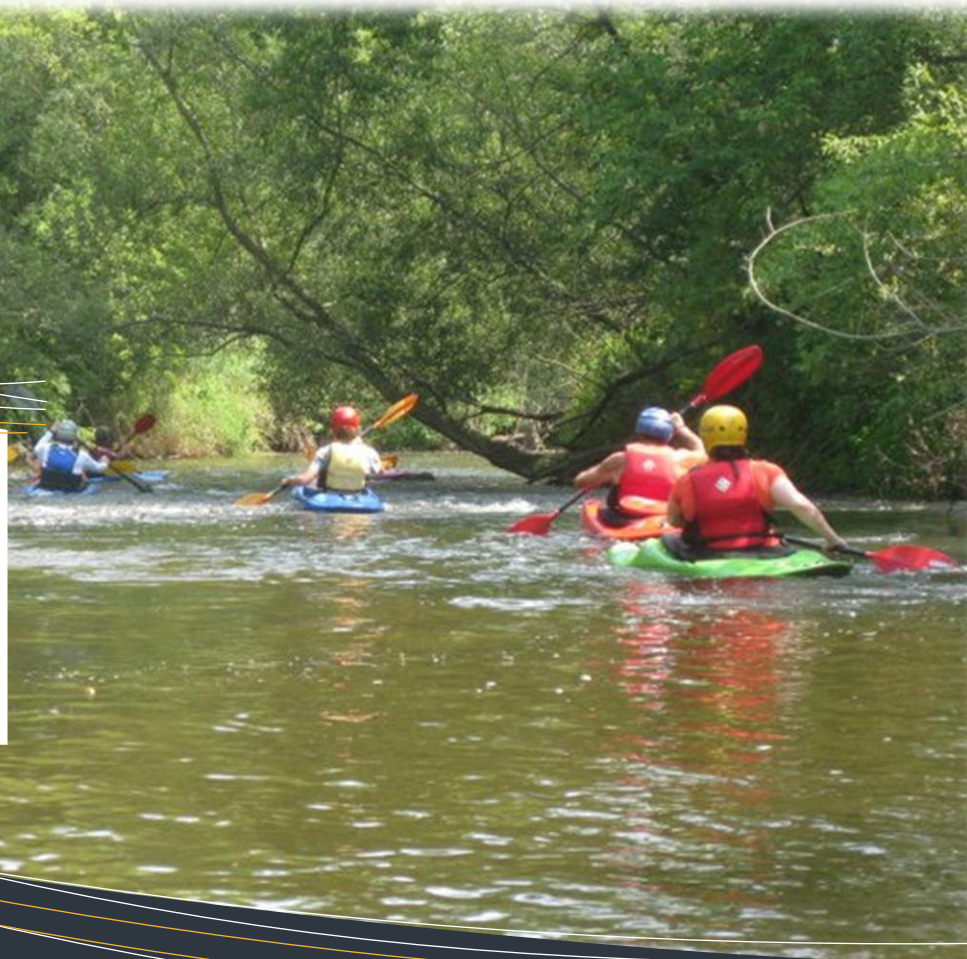
FOR MORE INFORMATION

Visit our website

<http://rockrivercoalition.org/badfish/>

Join us on Facebook:

<http://www.facebook.com/pages/Friends-of-Badfish-Creek-Watershed/123553431019234>.



GET INVOLVED!

- Join us in protecting our local watershed!
- Get your feet wet in a stream clean-up party
- Become a Citizen Stream Monitor (and meet some interesting macroinvertebrates)
- Paddle with us on our annual Canoe Tour
- Help in the effort to control invasive species
- Attend our public education programs
- Help get the word out to watershed residents

**WE CAN ALWAYS USE
MORE HANDS!**

Contact Lynne Diebel -- to become involved
lsdiebel@gmail.com



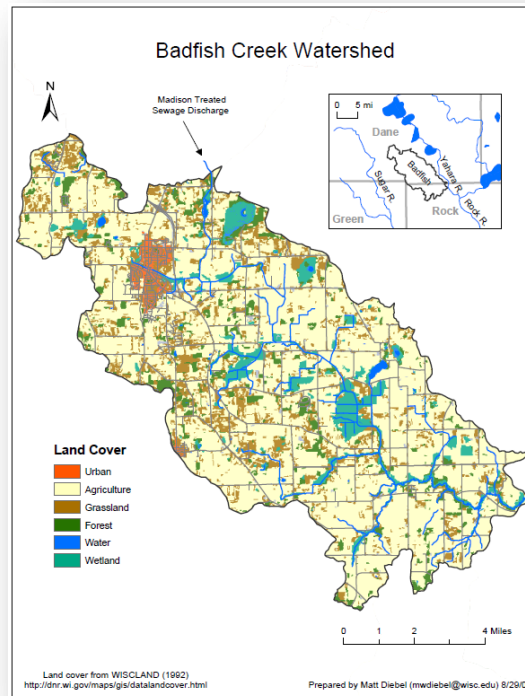
Our mission

TO EDUCATE OURSELVES AND OTHERS ABOUT BADFISH CREEK AND ITS WATERSHED,
TO WORK IN PARTNERSHIP TO IMPROVE RIPARIAN HABITAT AND WATER QUALITY,
AND TO ENCOURAGE LAND USE POLICIES THAT
PROTECT THE CREEK.

WHAT IS THE BADFISH CREEK WATERSHED?

The uplands, wetlands and tributaries from which all water flows into the Badfish are its watershed.

The Badfish Creek Watershed is located primarily in south central Dane County, extending into Northern Rock County. It contains both federal and state protected lands.



WHAT WE DO

- Education
- Work in partnership
- Improve riparian habitat
- Improve water quality
- Protect the creek
- Take time to enjoy this wonderful resource in our backyard!



SUCCESSFUL GRANTS AND PARTNERSHIPS

Dane County Environmental Council grants
DNR Aquatic Invasive Species grant
MMSD financial support for the sign project
River Alliance of Wisconsin
Youth Groups from Oregon and Stoughton

Dane County Conservation League
Invasive Plants of Wisconsin (IPAW)
Prairie Enthusiasts
Area Paddling Groups

What waters does the Badfish Creek Watershed include?

The Oregon Branch, which runs through Oregon, WI joins Badfish Creek east of town.

The Badfish flows into the Yahara River east of Cooksville. (The 6 creek miles of Badfish from Cooksville to the Yahara are a nice canoe route.) Another 7 river miles downstream, the Yahara feeds the Rock.

Two other tributaries—Rutland (Anthony) Branch and Spring Creek—are popular trout fishing streams.

The marshes around Frog Pond Creek, Lake Barney, Island Lake and Grass Lake offer good waterfowl habitat. Hook Lake is one of the most important wetlands in Dane County.

Watershed protection works best when groups work together.

FBCW became the first chapter of the Rock River Coalition in 2007. (The Badfish feeds the Yahara River which in turn feeds the Rock River.)

FBCW is currently working with the River Alliance on a project to identify and eradicate invasive riverbank plants.

Dane County Conservation League lends us enthusiastic volunteers for several invasive plant projects

Stoughton Boy Scout Troop 167 has a blast helping in our ongoing Japanese Knotweed project.

